

[Your Adventure Starts Here!](#) > [Activities](#) > [Ropes Parks](#) > [Ropes Park Interlaken](#)



Quick Facts

- 🕒 2.5 - 3 hours
- 🏃 9 Courses
- 🍷 BBQ area available for use
- 👥 No charge for spectators
- 🅇 Free parking on site

ROPES PARK INTERLAKEN

From 19 CHF

The Ropes Park in Interlaken is a forest playground with wooden bridges, Tarzan swings and zip lines.

The ropes park offers both beginners and adrenaline seekers an exciting day. The park is ideal for individuals, a group of friends or the whole family. You will be provided with everything you need and you will receive safety instructions before you set off into the trees.

[→ Prices](#) [→ Opening Times](#) [→ How to find us](#)

"My family came here on a rainy day as we weren't sure what else to do. It was so quiet and we stayed for about 5 hours, it's such good value for money! Really really good.

The whole system is well thought out and we all said how safe we felt, the instructions at the beginning were very clear. They have a variety of drinks and snacks but I would recommend taking a picnic if you are staying a while as there are plenty of tables outside." - Gilia from England

General Admission from CHF 21

General admission includes access to any course in the park (spectators are free). Anyone over 1.40m can try all 9 courses. We have 7 courses for kids between 1.20m and 1.40m. Kids who are between 1.10m and 1.20m can do 3 of these courses, as long as they have direct 1:1 assistance from an adult. These kids might also still enjoy the Snowli Kid's Courses.

Snowli Kids Course CHF 19

Great for kids! These three courses were designed for our youngest adventure seekers and offers a fun way to partake in the tree challenges while staying close to the ground. The Snowli Kids Courses are suitable for kids who are able to walk on their own. There is no minimum age or height. Parents do not need to pay and can assist from the ground.

Gift Vouchers

Step 1: Choose a voucher

Step 2: Personalise at checkout with the recipient's name and a personal message

Step 3: Send! You can print at home, we can deliver for you or you can send a digital voucher immediately.

OUTDOOR - Interlaken Ropes Park

Contact

☎ [0041 \(0\)33 224 07 04](tel:0041(0)332240704)

✉ info@outdoor.ch

Opening Hours

March

Sat - Sun 10:00 am - 5:00 pm

Last entry 3:00 pm

April - May

Mon - Fr 1:00 pm - 6:00 pm

Sat - Sun 10:00 am - 6:00 pm

Last entry 4:00 pm

June

Mon - Sun 10:00 am - 6:00 pm

Last entry 4:00 pm

July - August

Mon - Sun 10:00 am - 7:00 pm

Last entry 5:00 pm

September - October

Mon - Fr 1:00 pm - 6:00 pm

Sat - Sun 10:00 am - 6:00 pm

Last entry 4:00 pm

November

Sat - Sun 10:00 am - 5:00 pm

Last entry 3:00 pm

December - February

Open on request or spontaneously by good weather.

Please check the calendar for [availability](#).

Weather

We are open almost every day, in almost any weather. Exceptions are heavy rainfall, severe wind and thunderstorms.

Call [+41 \(0\)33 224 07 04](tel:+41(0)332240704) for up-to-date information

Address

Wagnerenstrasse
3800 Matten bei Interlaken
Switzerland

 [Google map](#)

Prices

Prices

Adults	CHF 42
Kids (under 16)	CHF 31
Groups 10+	CHF 38
School groups (under 16)	CHF 21
Snowli Kid's Courses	CHF 19

Activity Details

Recommended for

Everyone

What to bring

Sporty clothing, suitable footwear.

Requirements

- Max. weight 120 kg (265 lbs)
- No minimum height.
- Anyone over 1.40m can try all 9 courses. We have 7 courses for kids between 1.20m and 1.40m. Kids who are between 1.10m and 1.20m can do 3 of these courses, as long as they have direct 1:1 assistance from an adult. These kids might also still enjoy the Snowli courses.
- The Snowli courses are suitable for kids who are able to walk on their own. There is no minimum age or height. Parents do not need to pay and can assist from the ground.
- Small children can participate in the Bear course as long as they can walk on their own
- Children under 16 only with adult supervision
- Children under 18 must have the written consent of a parent or guardian

Season

Please check the [calendar](#) for the latest availability

How to find us

10 minutes from Interlaken center

The Adventure Park Interlaken is located in the forest between the Unspunnen meadow and the road to Heimwehfluh.

Driving

From the west on the A8, take the Interlaken West exit (24) and leave the highway. Continue to the roundabout and follow straight ahead to the first intersection (Heimwehfluhbahn), then turn right towards Heimwehfluh following the signs to the Seilpark.

From the East on the A8, after the Rugen Tunnel, take the Interlaken West exit (24) and leave the highway. Turn left towards Interlaken West, left at the roundabout and follow straight ahead to the first intersection (Heimwehfluhbahn), then turn right towards Heimwehfluh following the signs to the Seilpark.

Walking

We are 15 minutes walk from Interlaken West train station. Walk towards Heimwehfluh and follow the "Seilpark" signs from there.

What's included

Rope Park equipment and professional instruction.

Duration

Unlimited, but we recommend 2-3 hours.

Public Transport

Take the train or bus to Interlaken West train station. Walk towards Heimwehfluh and follow the "Seilpark" signs from there.

Taxi Rates

Special prices offered by Bödéli Taxi from anywhere in Interlaken, Matten or Unterseen to Seilpark Interlaken.

1-4 people CHF 12.00

5-8 people CHF 3.00 / person

Phone 0041 (0)33 822 00 88

Free Phone 0800 22 00 88

Team Ropes Park



Ronny Marti

Operations Manager - Seilparks



**Charlotte
Mueller**

Employee Ropes Park



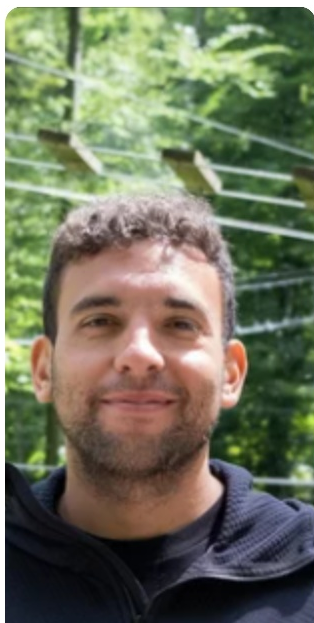
Cilu Danko

Employee Ropes Park



David Frautschi

Employee Ropes Park





**Martin
Rodriguez**

Employee Ropes Park



**Basem Haj
Mamoud**

Employee Ropes Park



Nanouk Stucki

Employee Ropes Park



Noemi Lehmann

Employee Ropes Park

Reference: <https://outdoor.ch/en/outdoor-activities/ropes-park-interlaken/#>